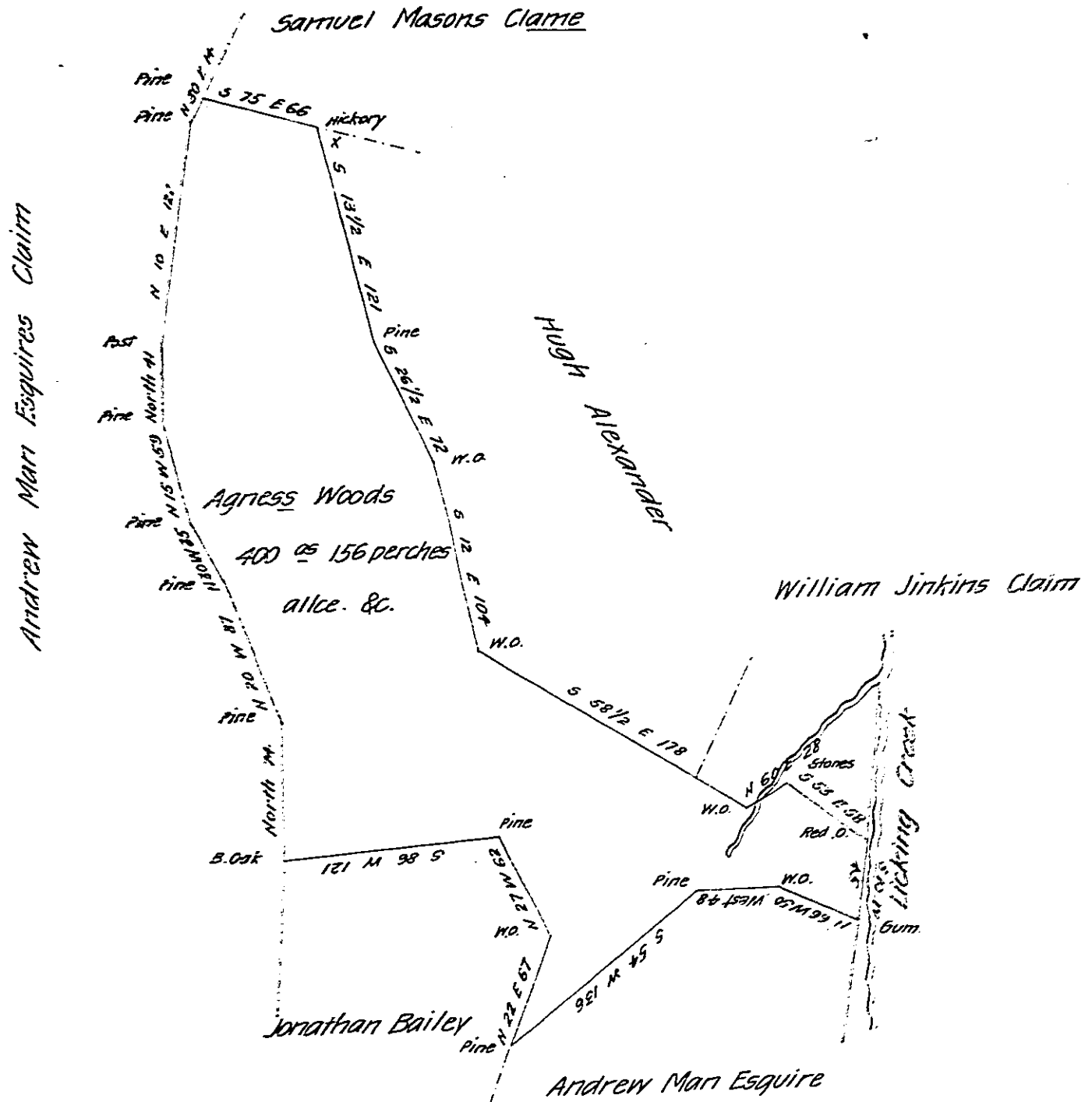


FORM NO. 1.



Situated in the Township of Bethel and County of Bedford on Licking Creek including an Improvement containing four hundred Acres one hundred fifty six perches and the usual Allowance for Roads &c. Surveyed the fifteenth day of August 1804 in pursuance of a Warrant dated the second day of August 1804

William Piper Dep<sup>y</sup> S<sup>r</sup>

To Samuel Cochran Esquire  
Surveyor General.

IN TESTIMONY that the above is a copy of the original remaining on file in the Department of Internal Affairs of Pennsylvania, made conformably to an Act of Assembly approved the 16th day of February 1833, I have hereunto set my hand and caused the Seal of said Department to be affixed, at Harrisburg, this thirteenth day of June 1867

*Henry Howse*  
Secretary of Internal Affairs.